

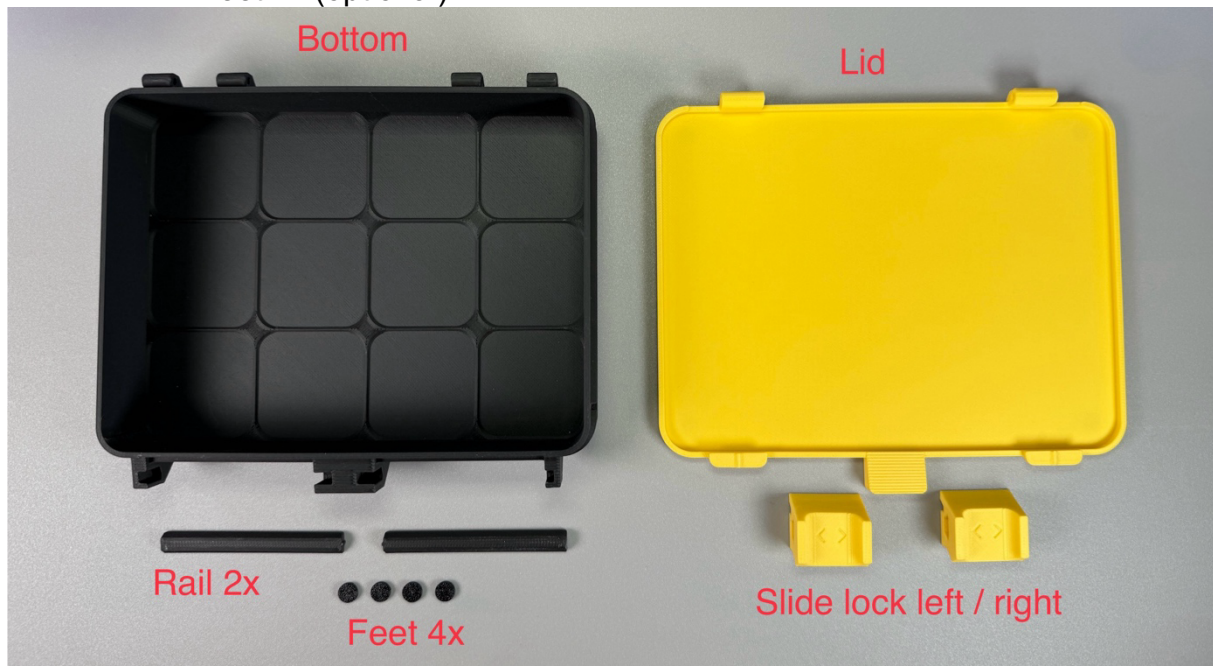
Assembly Guide Organizer Box XL Double + Organizer Holder XL Double

A little information on the side. Although the pictures are for the smaller organizer box, the structure is exactly the same.

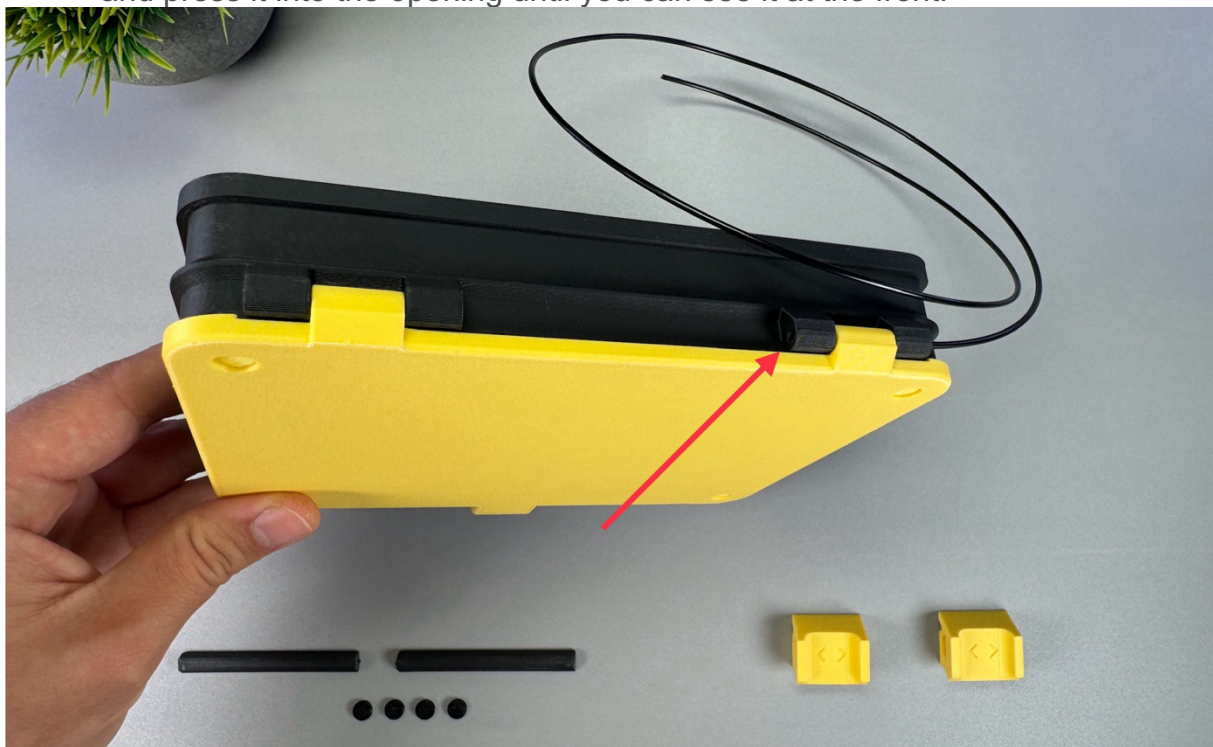
Organizer Box:

1. Parts needed for assembly

- Bottom
- Lid
- Rail 2x
- Slide lock left
- Slide lock right
- Feet 4x (optional)



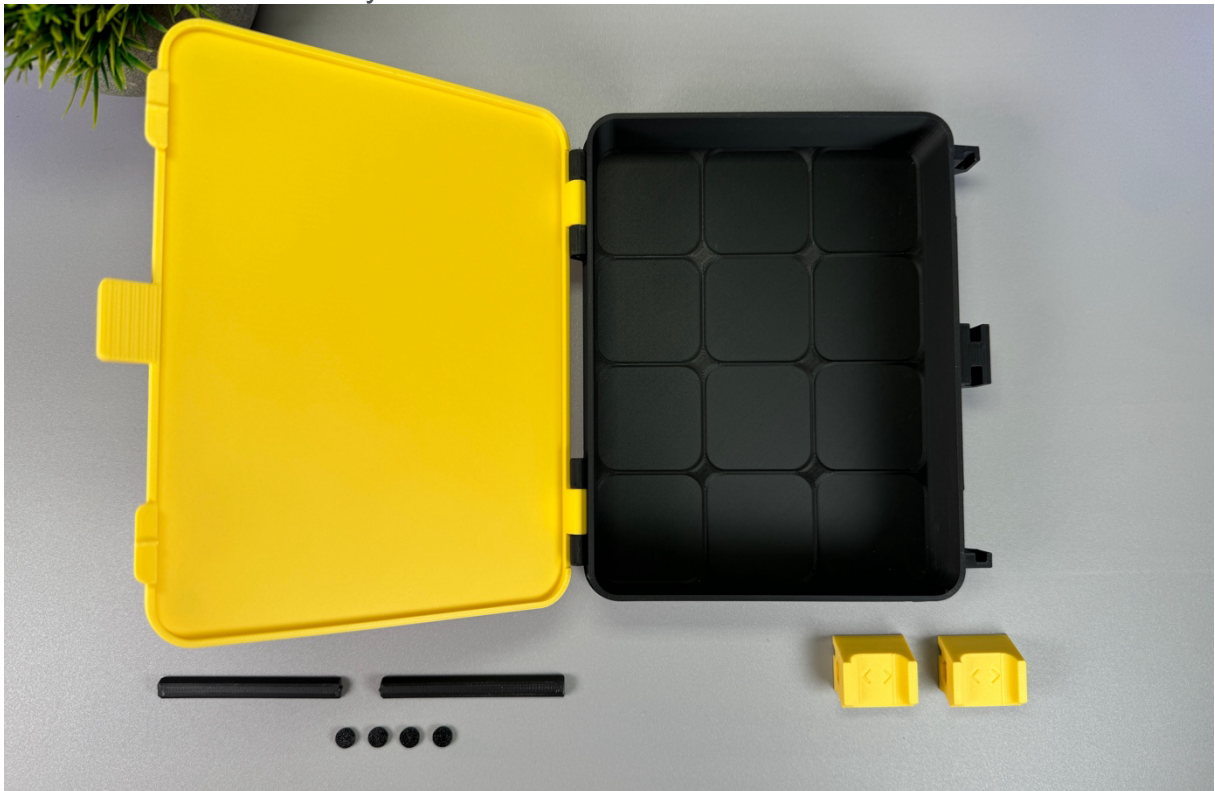
- #### 2. Put the lid on the bottom and take normal 1.75mm filament (preferably PETG) and press it into the opening until you can see it at the front.



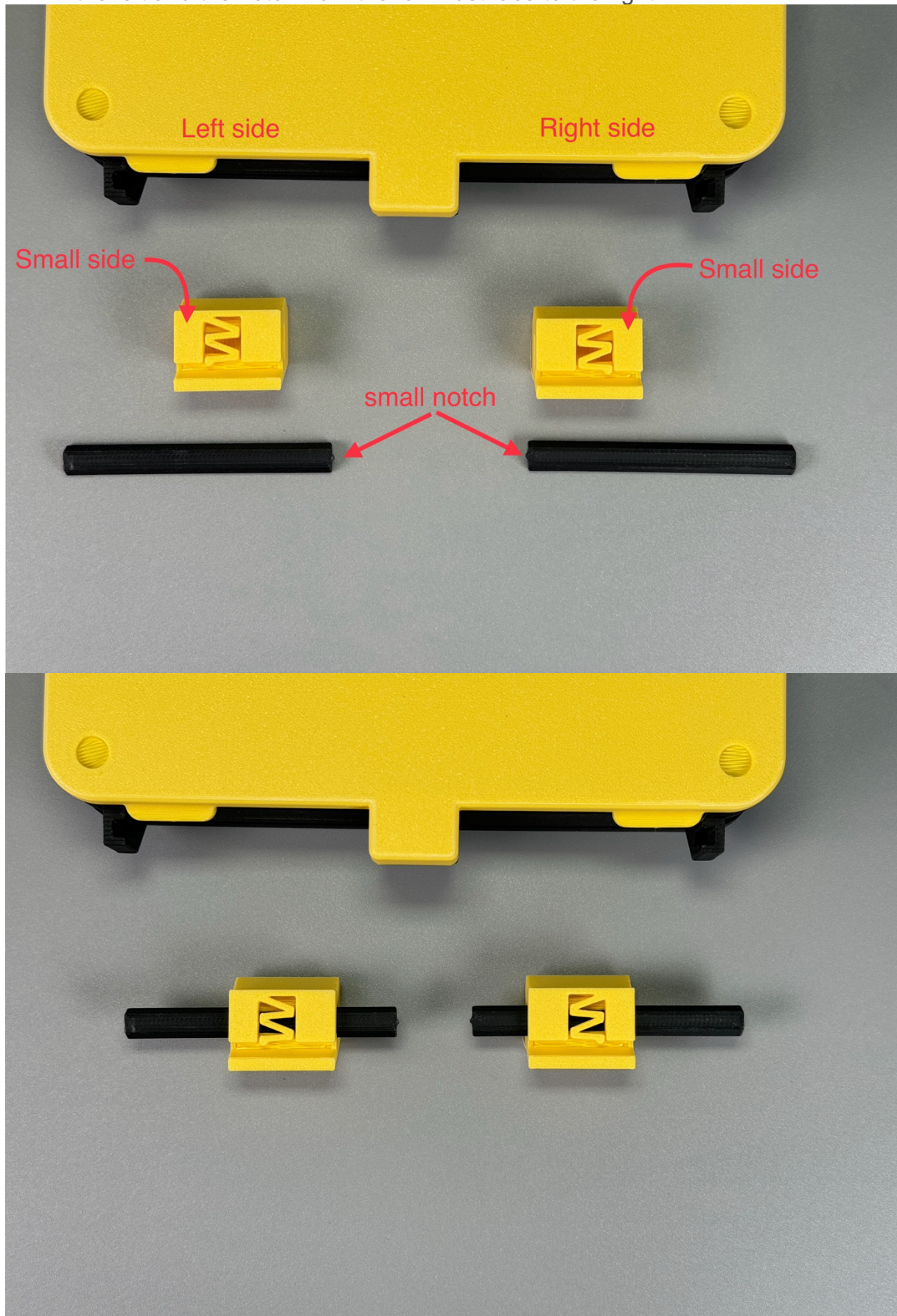
3. Cut the filament flush and do exactly the same on the other side



4. The lid is now firmly connected to the bottom



5. Now slide the rail into the slide lock left. Note that the small side must face to the left and the notch from the rail must face to the right.



6. Press the small notch into the recess



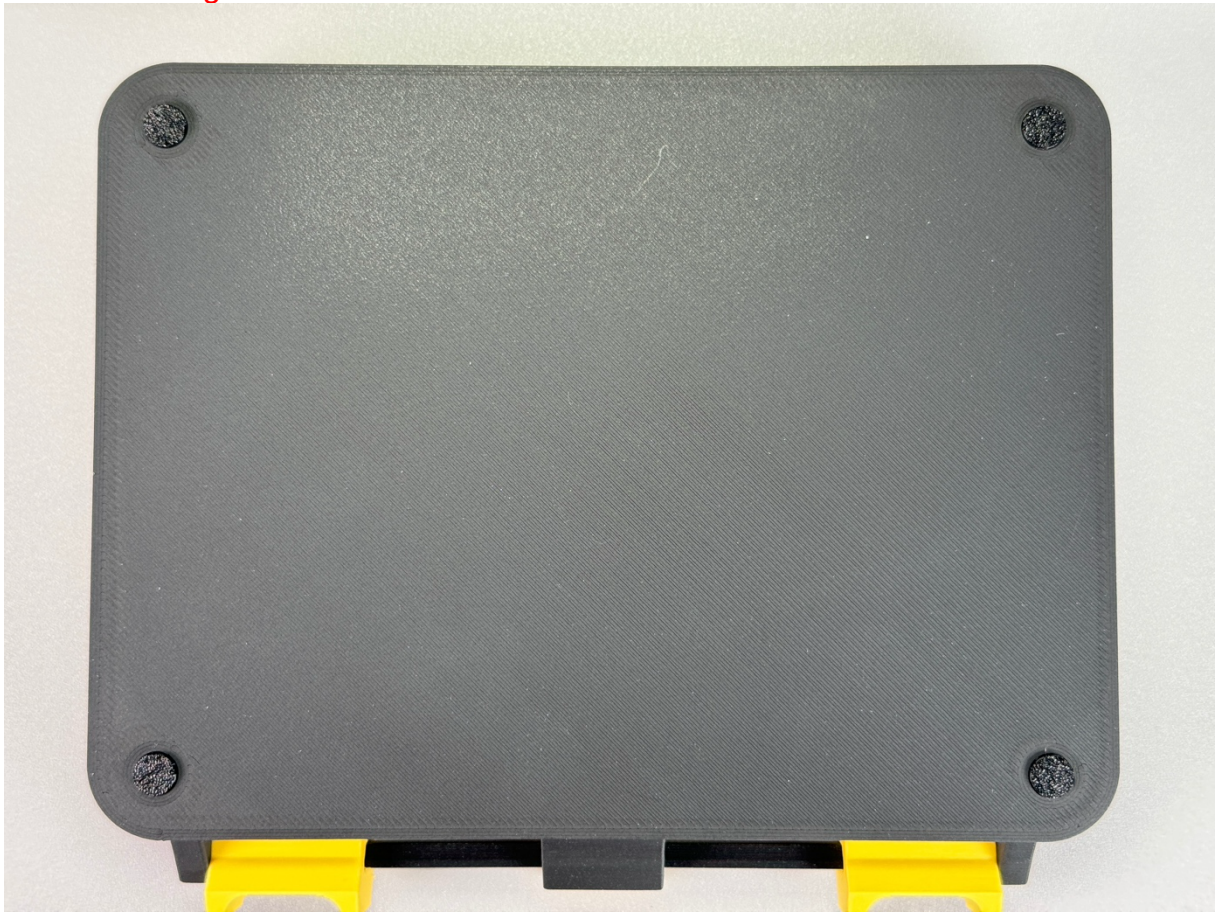
7. Press the rail on the right side down



8. It must look like this! When the rail is too loose you can add a little bit of glue! Do this on the other side as well. Make sure that the two slide locks can be moved easily. If not, file away a bit.



9. You can add some TPU feet below if you like.
Do not glue the feet on the lid!!!!

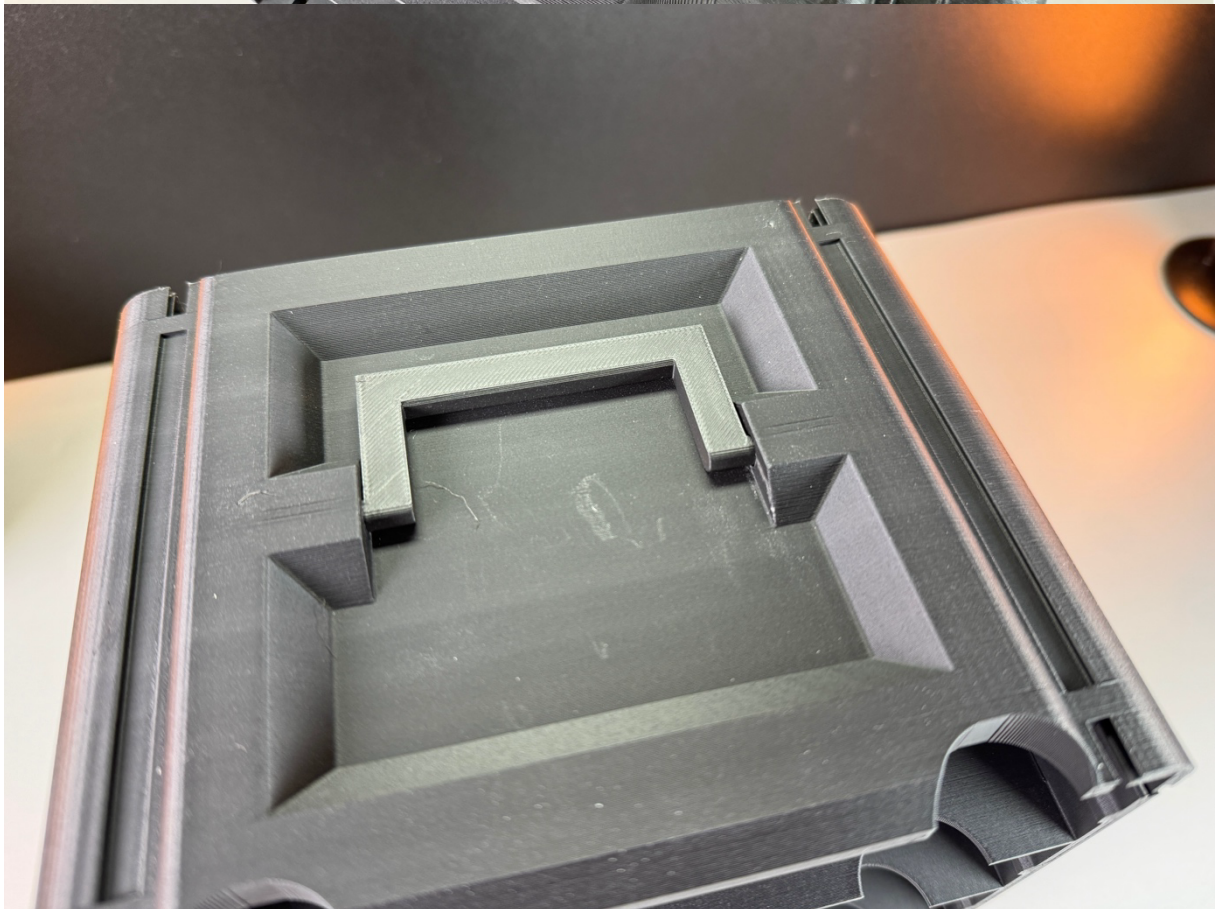
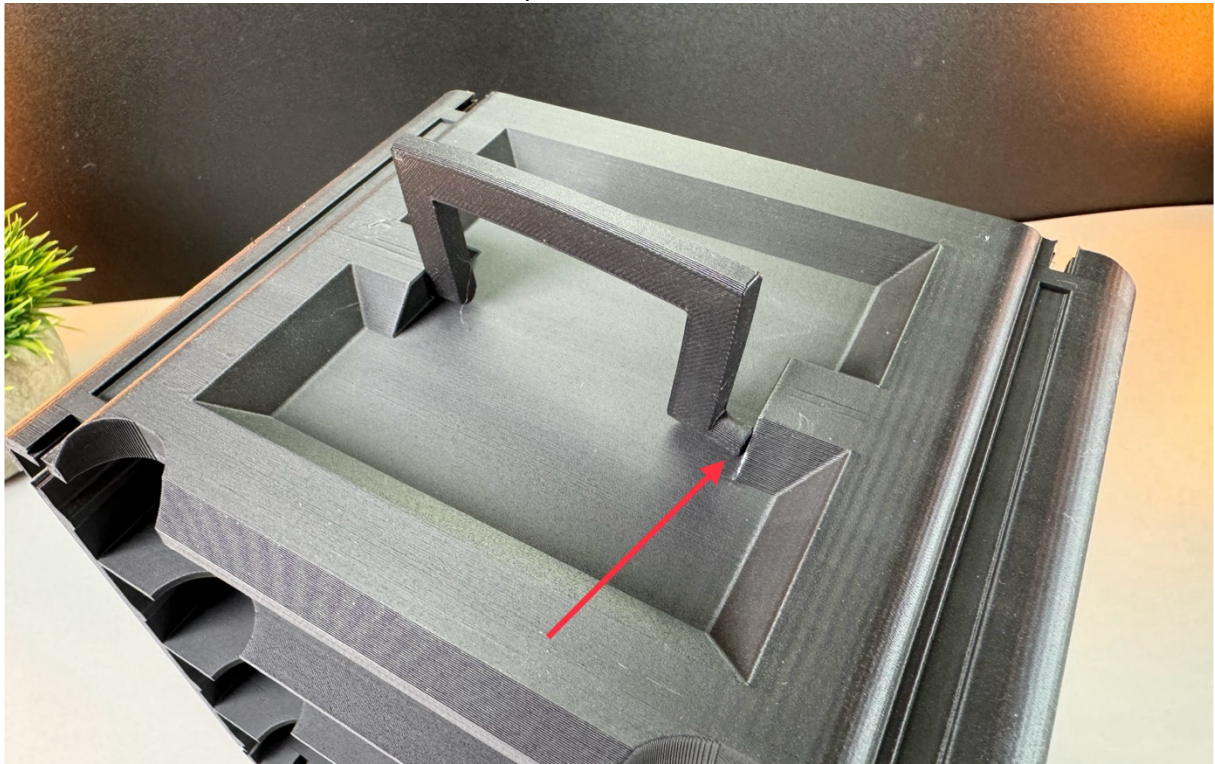


10. Finished 😊

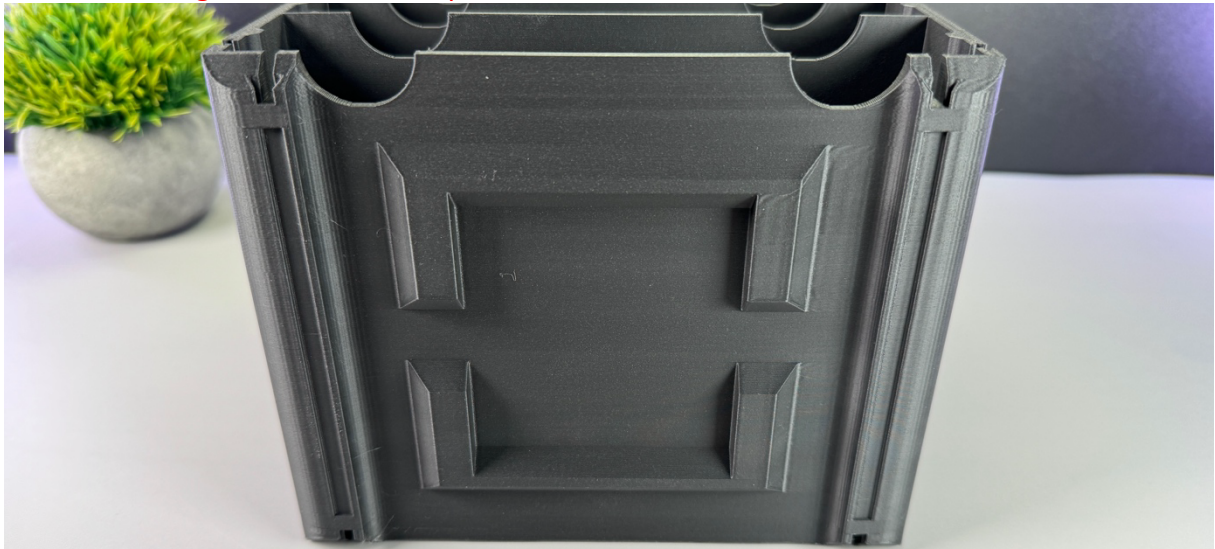


Organizer Holder:

1. Press the handle to the side and press it into the hole



2. (Optional) You can glue some feet on the bottom of the Organizer Holder
Do not glue the feet on top where the handle is located!



3. Finished 😊

